

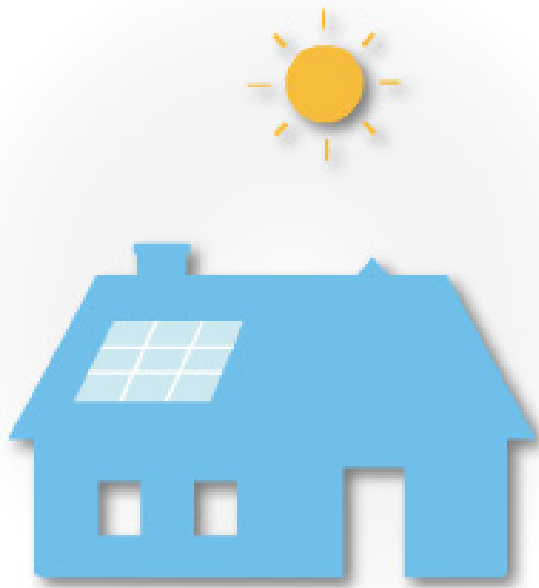


Your Guide to Net Energy Metering and the Billing Process



Overview

Thank you for choosing renewable energy and helping the environment.



This interactive guide will walk you through several topics, including:

Net Energy Metering Basics:

The difference in the amount of energy you produce and the energy you consume.

Net Energy Usage Measurement:

Net Energy Usage is measured by the SmartMeter™ at your business.

Your New Monthly Billing Process:

Helpful information about your monthly and year-to-date net energy usage and associated costs.

Annual True-Up Statement:

A reconciliation of your total energy credits and charges for the 12-month billing period, as well as the final balance you will pay.

Net Surplus Compensation:

A payment you may be eligible for if you generate more energy than you use in your 12-month billing cycle.



Net Energy Metering Basics

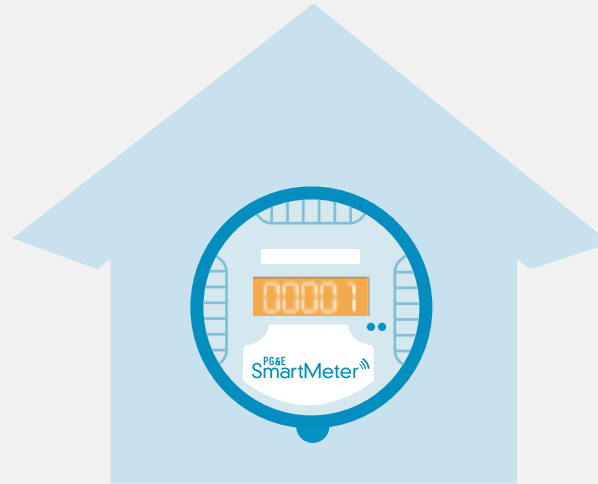


Understanding what it means to be enrolled in the Net Energy Metering (NEM) program allows you to use the information provided as an energy management tool.

The idea is simple: Electricity generated by your system—first and foremost—is used to provide energy for your business.

This offsets the amount of electricity that needs to be provided by PG&E, and any electricity that you don't consume is exported to the grid. When your system is not generating energy (for example, at night) or it does not generate enough electricity to meet your energy needs, the shortfall is supplied by PG&E.

How Net Energy Usage is measured



Net energy usage is measured by the SmartMeter™ at your business. Some months, you may use more energy than your system generates, which results in a charge. Other months, your system may produce more energy than you consume and you will receive a credit. Because you are participating in a [Time-of-Use](#) rate plan, you may also receive a credit if you are exporting energy to the grid when rates are higher and consuming energy when rates are lower (such as at night).

Finally, NEM customers are normally on a 12-month billing cycle that results in what is known as True-Up. Throughout the year, charges are offset by your credits. At the end of your 12-month billing cycle, all charges and credits are reconciled to determine whether or not you have a remaining balance.



Your new monthly PG&E process

While you will continue to receive a monthly PG&E bill, titled Energy Statement, you will also receive a monthly NEM Electric Statement that tracks your monthly charges and credits. As a NEM customer you are not charged for the electricity you use or credited for the electricity you generate until the end of your 12-month billing cycle.

Pacific Gas and Electric Company
PACIFIC GAS AND ELECTRIC COMPANY
NET ENERGY METERING ELECTRIC STATEMENT
THIS IS NOT A BILL.
Service Dates: January 09, 2017 to February 08, 2017
True-up period from Dec 2016 to Nov 2017

JOHN SMITH
1234 YOUR STREET
ANY TOWN, STATE, 12345

Rate Schedule: A1XPNTM2
Account ID: 0123456789
Service ID: 0123456789

PAGE 1

TOTAL CURRENT MONTHS BILLED AMOUNT: \$10.71*

*This amount is the minimum you must pay this month and is reflected on your regular monthly blue bill, in addition to the energy charges that you may pay monthly or at the end of the true-up period shown below. It includes the following components:
Electricity \$10.71

ENERGY CHARGES-CREDITS

Current Month Energy Charge or Credit (-): \$136.17
Cumulative Energy Charge or Credit (-) for the current true-up period: \$297.71
This Cumulative Energy Charge does not reflect any payment you may have made.
Current Month Non-Bypassable Charges: \$130.80
Cumulative Non-Bypassable Charges for the current True-Up period: \$495.50

*The true Minimum Non-Bypassable Charge (NEM) is calculated based on your energy usage and is subject to determine the True-Up amount. This amount is included within the Energy Charge forecast, cannot be offset by credits from exports. This charge includes the following fees: Public Purpose Programs, Nuclear Decommissioning, DWR Bond Charge and Competitive Transition Energy.

ANY UNPAID ENERGY CHARGES WILL BE DUE AT THE END OF YOUR TRUE-UP PERIOD (Nov 2017)

NET CURRENT MONTH METER INFORMATION

CHANNEL ID	METER DATE	PREV READ DATE	CURRENT READ DATE	PREV READ TIME	CURRENT READ TIME	USAGE (kWh)	POST (kWh)
02AM2016A	01/09/17	01/09/17	02/08/17	24:00	24:00	0.000	0.000
123456789	01/09/17	01/09/17	02/08/17	24:00	24:00	0.000	0.000
TOTALS						0.00	0.00

ENERGY TRUE-UP HISTORY

BILLING MONTH	BILL TO DATE	W/STRT PMT	W/END PMT	TOTAL ENERGY	ENERGY EXPORTS	MINIMUM ENERGY CHARGES**	NON-BYPASSABLE CHARGES**
FEB 2017	02/08/17	-1.00	1.00	0.00	\$10.47		\$176.80
JAN 2017	01/09/17	0	200	200	\$131.80	0.00	\$131.80
DEC 2016	12/08/16	0	0	0	\$130.80	0.00	\$130.80
TOTALS		0	0	0	\$273.07	\$0.00	\$439.40

Energy Charges (credits) include all energy related amounts and fees.
**The true Minimum Non-Bypassable Charge (NEM) is calculated based on your energy usage and is subject to determine the True-Up amount. This amount is included within the Energy Charge forecast, cannot be offset by credits from exports. This amount includes the following fees: Public Purpose Programs, Nuclear Decommissioning, DWR Bond Charge and Competitive Transition Energy.

For inquiries about your Net Energy Metering bill, please contact the Solar Customer Service Center at 1-877-741-4112.
For all other inquiries, please call 1-800-743-5000.

True Bill to: 11/09/16 Billing Year ID: 123456789
Bill to: 12/84



Your annual True-Up Statement



If you have a balance remaining at the end of the year, your True-Up statement will tell you what amount is due and that amount will appear on your PG&E bill. If you have a credit remaining, your NEM balance resets to zero. You'll also learn if you are eligible for "Net Surplus Compensation" payments for any excess energy you generated throughout the annual billing period.

Once all your charges, credits, and compensation are reconciled through True-Up, the process begins all over again for a new 12-month billing cycle.



Net Surplus Compensation

The amount of electricity you generate, how much you use, and your energy rate all determine if there is a net charge or net credit at the end of your 12-month billing cycle.

If you have a credit balance at your annual True-Up, you may be eligible for payment through Net Surplus Compensation (NSC). The credit for excess energy generated over your entire annual billing period is paid back to you at roughly \$0.03 per kilowatt-hour (kWh).



To keep track of your total net energy generation or consumption, just check your PG&E Electric Statement in the “Energy True-Up History” table (“Total Energy” column). You are eligible for NSC at True-Up only when your “TOTALS” column at the bottom of “Total Energy” appears as a negative amount.

Additional steps are required to receive payments for any Renewable Energy Credits associated with your NSC. [Learn More](#)



Monitoring success: Your Net Energy Metering Statement

For most customers, the NEM electric statement provides a useful tool to understand current energy use and help you keep track of how you are progressing for the year to avoid any billing surprises.

[CLICK HERE TO SEE DETAILS](#)

Pacific Gas and Electric Company
PACIFIC GAS AND ELECTRIC COMPANY
NET ENERGY METERING ELECTRIC STATEMENT
THIS IS NOT A BILL.
 Service Dates: January 09,2017 to February 08,2017
 True-up period from Dec 2016 to Nov 2017

JOHN SMITH
 1245 YOUR STREET
 ANYTOWN, STATE, 12350

Rate Schedule: A1XP/NEM2
 Account ID: 0123456789
 Service ID: 0123456789

PAGE: 1

TOTAL CURRENT MONTH'S BILLED AMOUNT: \$19.71¹

¹This amount is the minimum you must pay this month and is reflected on your regular monthly blue bill, in addition to the energy charges that you may pay monthly or at the end of the true-up period shown below. It includes the following components:

ENERGY CHARGES/CREDITS

Current Month Energy Charge or Credit (-) **\$136.17**
 Cumulative Energy Charges or Credits (+) for the current true-up period: **\$397.71**
 This Cumulative Energy Charge does not reflect any payment you may have made.

²Current Month Non-Bypassable Charges: **\$139.80**
 Cumulative Non-Bypassable Charges for the current true-up period: **\$349.50**

³The State Standard Non-Bypassable Charge (SNBC) is calculated based on your energy usage and is relevant to customers on the True-Up amount. This amount is included within the Energy Charges however, cannot be offset by credits from exports. This charge includes the following fees: Public Purpose Program, Nuclear Decommissioning, DFW Bond Charge and Compression Treatment Charge.

ANY UNPAID ENERGY CHARGES WILL BE DUE AT THE END OF YOUR TRUE-UP PERIOD (Nov 2017)

1) CURRENT MONTH METER INFORMATION

CHANNEL ID	METER TYPE	PREVIOUS READ DATE	CURRENT READ DATE	PREVIOUS READ kWh	CURRENT READ kWh	USA000	POS MET
1234567891A	000004774	01/09/17	02/09/17	2400	2400	9.000	6.000
1234567891C	000004774	01/09/17	02/09/17	2400	2400	7.900	0
TOTALS						169	6.000

ENERGY TRUE-UP HISTORY:

TRUE-UP MONTH	TRUE-UP DATE	WINTER FUEL	WINTER GAS	TOTAL ENERGY CHARGES	ENERGY CREDITS	MINIMUM CHARGES	NON-BYPASSABLE CHARGES ²
DEC 2016	02/09/17	0	6,000	100	\$136.17	\$139.80	\$139.80
JAN 2017	01/09/17	-1,000	200	100	\$131.00	\$139.80	\$139.80
FEB 2016	12/08/16	0	600	100	\$410.00	\$139.80	\$139.80
TOTALS				100	\$397.71	\$399.80	\$399.80

¹Energy Charges (+) and (-) include all energy related amounts and taxes.
²The State Standard Non-Bypassable Charge (SNBC) is calculated based on your energy usage and is relevant to customers on the True-Up amount. This amount is included within the Energy Charges however, cannot be offset by credits from exports. This charge includes the following fees: Public Purpose Program, Nuclear Decommissioning, DFW Bond Charge and Compression Treatment Charge.

For inquiries about your Net Energy Metering bill, please contact the Solar Customer Service Center at 1-877-743-4112.
 For all other inquiries, please call 1-800-743-5000.


Date Billed: 11/09/16
 Billing Point ID: 12456 1234



Monitoring success: Your Net Energy Metering Statement

**CLICK ON EACH NUMBER FOR A
DETAILED EXPLANATION.**

1 Service dates and True-Up period – The Net Energy Metering Electric Statement is sent for each of the 12 billing months. This provides the current dates you are being billed for and reminds you of the start and end of your True-Up period.


PACIFIC GAS AND ELECTRIC COMPANY
 NET ENERGY METERING ELECTRIC STATEMENT
THIS IS NOT A BILL
 Service Dates: January 09,2017 to February 08,2017
 True-up period from Dec 2016 to Nov 2017

JOHN SMITH
 1243 YOUR STREET
 ANYTOWN, STATE, 12356

Rate Schedule: A1XP/NEM2
 Account ID: 0123456789
 Service ID: 0123456789

PAGE 1

3 TOTAL CURRENT MONTH'S BILLED AMOUNT: **\$19.71***

*This amount is the minimum you must pay this month and is reflected on your regular monthly blue bill, in addition to the energy charges that you may pay monthly or at the end of the true-up period shown below. It includes the following components:
Distribution \$19.71.

4 ENERGY CHARGES/CREDITS

Current Month Energy Charge or Credit (-)	\$136.17
Cumulative Energy Charges or Credits (-) for the current true-up period: <small>This Cumulative Energy Charge does not reflect any payment you may have made.</small>	\$397.71
<small>**Current Month Non-Bypassable Charges</small>	\$139.80
<small>Cumulative Non-Bypassable Charges for the current True-Up period</small>	\$349.50

**The State Mandated Non-Bypassable Charge (NBC) is calculated based on your energy usage and is relevant to determine the True-Up amount. This amount is included within the Energy Charges however, cannot be offset by credits from exports. This charge includes the following fees: Public Purpose Programs, Nuclear Decommissioning, DWR Bond Charge and Competition Transition Charge.

ANY UNPAID ENERGY CHARGES WILL BE DUE AT THE END OF YOUR TRUE-UP PERIOD (Nov 2017)

5 (E1) CURRENT MONTH METER INFORMATION

CHANNEL ID	METER BADGE	PRIOR READ DATE	CURRENT READ DATE	PRIOR READ TIME	CURRENT READ TIME	USAGE (kWH)	POS NET USAGE(kWH)
1234567891A	1009884774	01/09/17	02/08/17	24:00	24:00	8,000	-6,000
1234567891C	1009884774	01/09/17	02/08/17	24:00	24:00	-7,900	0
TOTALS						100	-6,000

6 ENERGY TRUE-UP HISTORY:

BILLING MONTH	BILL TO DATE	WINTER PART	WINTER OFF	TOTAL ENERGY	ENERGY CHARGES /CREDITS*	MINIMUM ENERGY CHARGES	NON-BYPASSABLE CHARGES**
FEB 2017	02/08/17	-1,000	1,100	100	\$136.17		\$139.80
JAN 2017	01/09/17	0	200	200	\$151.06		\$116.50
DEC 2016	12/08/16	0	100	100	\$110.48		\$91.70
TOTALS				400	\$397.71	\$0.00	\$349.50

*Energy Charges/Credits (-) include all energy related amounts and taxes.
**The State Mandated Non-Bypassable Charge (NBC) is calculated based on your energy usage and is relevant to determine the True-Up amount. This amount is included within the Energy Charges however, cannot be offset by credits from exports. This charge includes the following fees: Public Purpose Programs, Nuclear Decommissioning, DWR Bond Charge and Competition Transition Charge.

For inquiries about your Net Energy Metering bill, please contact the Solar Customer Service Center at 1-877-743-4112.
For all other inquiries, please call 1-800-743-5000.

Date Billed: 11/09/16
 Biller: EXR4


Billing Point ID: 123456 1234



Monitoring success: Your Net Energy Metering Statement

**CLICK ON EACH NUMBER FOR A
DETAILED EXPLANATION.**

2 Account details – Use the statement for a quick reference to your electric rate schedule, account identification and service identification number.


PACIFIC GAS AND ELECTRIC COMPANY
 NET ENERGY METERING ELECTRIC STATEMENT
THIS IS NOT A BILL
 Service Dates: January 09,2017 to February 08,2017
 True-up period from Dec 2016 to Nov 2017

JOHN SMITH
1243 YOUR STREET
ANYTOWN, STATE, 12356

Rate Schedule: A1XP/NEM2
Account ID: 0123456789
Service ID: 0123456789

PAGE 1

3 TOTAL CURRENT MONTH'S BILLED AMOUNT: **\$19.71***

*This amount is the minimum you must pay this month and is reflected on your regular monthly blue bill, in addition to the energy charges that you may pay monthly or at the end of the true-up period shown below. It includes the following components:
Distribution \$19.71.

4 ENERGY CHARGES/CREDITS

Current Month Energy Charge or Credit (-)	\$136.17
Cumulative Energy Charges or Credits (-) for the current true-up period: <small>This Cumulative Energy Charge does not reflect any payment you may have made.</small>	\$397.71
<small>**Current Month Non-Bypassable Charges</small>	\$139.80
<small>Cumulative Non-Bypassable Charges for the current True-Up period</small>	\$349.50

**The State Mandated Non-Bypassable Charge (NBC) is calculated based on your energy usage and is relevant to determine the True-Up amount. This amount is included within the Energy Charges however, cannot be offset by credits from exports. This charge includes the following fees: Public Purpose Programs, Nuclear Decommissioning, DWR Bond Charge and Competition Transition Charge.

ANY UNPAID ENERGY CHARGES WILL BE DUE AT THE END OF YOUR TRUE-UP PERIOD (Nov 2017)

5 (E1) CURRENT MONTH METER INFORMATION

CHANNEL ID	METER BADGE	PRIOR READ DATE	CURRENT READ DATE	PRIOR READ TIME	CURRENT READ TIME	USAGE (kWh)	POS NET USAGE(kWh)
1234567891A	1009884774	01/09/17	02/08/17	24:00	24:00	8,000	-6,000
1234567891C	1009884774	01/09/17	02/08/17	24:00	24:00	-7,900	0
TOTALS						100	-6,000

6 ENERGY TRUE-UP HISTORY:

BILLING MONTH	BILL TO DATE	WINTER PART	WINTER OFF	TOTAL ENERGY	ENERGY CHARGES /CREDITS*	MINIMUM ENERGY CHARGES	NON-BYPASSABLE CHARGES**
FEB 2017	02/08/17	-1,000	1,100	100	\$136.17		\$139.80
JAN 2017	01/09/17	0	200	200	\$151.06		\$116.50
DEC 2016	12/08/16	0	100	100	\$110.48		\$93.70
TOTALS				400	\$397.71	\$0.00	\$349.50

*Energy Charges/Credits (-) include all energy related amounts and taxes.
**The State Mandated Non-Bypassable Charge (NBC) is calculated based on your energy usage and is relevant to determine the True-Up amount. This amount is included within the Energy Charges however, cannot be offset by credits from exports. This charge includes the following fees: Public Purpose Programs, Nuclear Decommissioning, DWR Bond Charge and Competition Transition Charge.

For inquiries about your Net Energy Metering bill, please contact the Solar Customer Service Center at 1-877-743-4112.
For all other inquiries, please call 1-800-743-5000.

Date Billed: 11/09/16
Biller: EXR4


Billing Point ID: 123456 1234



Monitoring success: Your Net Energy Metering Statement

CLICK ON EACH NUMBER FOR A DETAILED EXPLANATION.

3 Total current months billed amount – This amount reflects the amount on this month’s PG&E bill and must be paid by the due date listed there. It will not include actual charges for electricity until your True-Up month when charges and credits are reconciled.


PACIFIC GAS AND ELECTRIC COMPANY
 NET ENERGY METERING ELECTRIC STATEMENT
THIS IS NOT A BILL
 Service Dates: January 09,2017 to February 08,2017
 True-up period from Dec 2016 to Nov 2017

JOHN SMITH
1243 YOUR STREET
ANYTOWN, STATE, 12356

Rate Schedule: A1XP/NEM2
Account ID: 0123456789
Service ID: 0123456789

PAGE 1

3 TOTAL CURRENT MONTH'S BILLED AMOUNT: **\$19.71***

*This amount is the minimum you must pay this month and is reflected on your regular monthly blue bill, in addition to the energy charges that you may pay monthly or at the end of the true-up period shown below. It includes the following components:
Distribution \$19.71.

4 ENERGY CHARGES/CREDITS

Current Month Energy Charge or Credit (-)	\$136.17
Cumulative Energy Charges or Credits (-) for the current true-up period: <small>This Cumulative Energy Charge does not reflect any payment you may have made.</small>	\$397.71
<small>**Current Month Non-Bypassable Charges</small>	\$139.80
<small>Cumulative Non-Bypassable Charges for the current True-Up period</small>	\$349.50

**The State Mandated Non-Bypassable Charge (NBC) is calculated based on your energy usage and is relevant to determine the True-Up amount. This amount is included within the Energy Charges however, cannot be offset by credits from exports. This charge includes the following fees: Public Purpose Programs, Nuclear Decommissioning, DWR Bond Charge and Competition Transition Charge.

ANY UNPAID ENERGY CHARGES WILL BE DUE AT THE END OF YOUR TRUE-UP PERIOD (Nov 2017)

5 (E1) CURRENT MONTH METER INFORMATION

CHANNEL ID	METER BADGE	PRIOR READ DATE	CURRENT READ DATE	PRIOR READ TIME	CURRENT READ TIME	USAGE (kWh)	POS NET USAGE(kWh)
1234567891A	1009884774	01/09/17	02/08/17	24:00	24:00	8,000	-6,000
1234567891C	1009884774	01/09/17	02/08/17	24:00	24:00	-7,900	0
TOTALS						100	-6,000

6 ENERGY TRUE-UP HISTORY:

BILLING MONTH	BILL TO DATE	WINTER PART	WINTER OFF	TOTAL ENERGY	ENERGY CHARGES /CREDITS*	MINIMUM ENERGY CHARGES	NON-BYPASSABLE CHARGES**
FEB 2017	02/08/17	-1,000	1,100	100	\$136.17		\$139.80
JAN 2017	01/09/17	0	200	200	\$151.06		\$116.50
DEC 2016	12/08/16	0	100	100	\$110.48		\$93.70
TOTALS				400	\$397.71	\$0.00	\$349.50

*Energy Charges/Credits (-) include all energy related amounts and taxes.
**The State Mandated Non-Bypassable Charge (NBC) is calculated based on your energy usage and is relevant to determine the True-Up amount. This amount is included within the Energy Charges however, cannot be offset by credits from exports. This charge includes the following fees: Public Purpose Programs, Nuclear Decommissioning, DWR Bond Charge and Competition Transition Charge.

For inquiries about your Net Energy Metering bill, please contact the Solar Customer Service Center at 1-877-743-4112.
For all other inquiries, please call 1-800-743-5000.

Date Billed: 11/09/16
Biller: EXR4


Billing Point ID: 123456 1234



Monitoring success: Your Net Energy Metering Statement

**CLICK ON EACH NUMBER FOR A
DETAILED EXPLANATION.**

4 **Energy charges/credits** – Your Net Energy Metering Electric Statement keeps track of your Cumulative Charges and Credits from the start of your 12-month billing cycle. This section is important to track how much you are estimated to pay at the end of your annual True-Up period. Please pay attention to the “Cumulative Energy Charges or Credits” and the True-Up date when they will be due.


PACIFIC GAS AND ELECTRIC COMPANY
 NET ENERGY METERING ELECTRIC STATEMENT
 THIS IS NOT A BILL
 Service Dates: January 09,2017 to February 08,2017
 True-up period from Dec 2016 to Nov 2017

JOHN SMITH
1243 YOUR STREET
ANYTOWN, STATE, 12356

Rate Schedule: A1XP/NEM2
Account ID: 0123456789
Service ID: 0123456789

PAGE 1

3 **TOTAL CURRENT MONTH'S BILLED AMOUNT:** **\$19.71***

*This amount is the minimum you must pay this month and is reflected on your regular monthly blue bill, in addition to the energy charges that you may pay monthly or at the end of the true-up period shown below. It includes the following components:
Distribution \$19.71.

4 **ENERGY CHARGES/CREDITS**

Current Month Energy Charge or Credit (-)	\$136.17
Cumulative Energy Charges or Credits (-) for the current true-up period: This Cumulative Energy Charge does not reflect any payment you may have made.	\$397.71
<small>**Current Month Non-Bypassable Charges</small>	\$139.80
Cumulative Non-Bypassable Charges for the current True-Up period	\$349.50

**The State Mandated Non-Bypassable Charge (NBC) is calculated based on your energy usage and is relevant to determine the True-Up amount. This amount is included within the Energy Charges however, cannot be offset by credits from exports. This charge includes the following fees: Public Purpose Programs, Nuclear Decommissioning, DWR Bond Charge and Competition Transition Charge.

ANY UNPAID ENERGY CHARGES WILL BE DUE AT THE END OF YOUR TRUE-UP PERIOD (Nov 2017)

5 **(E1) CURRENT MONTH METER INFORMATION**

CHANNEL ID	METER BADGE	PRIOR READ DATE	CURRENT READ DATE	PRIOR READ TIME	CURRENT READ TIME	USAGE (kWH)	POS NET USAGE(kWH)
1234567891A	1009884774	01/09/17	02/08/17	24:00	24:00	8,000	-6,000
1234567891C	1009884774	01/09/17	02/08/17	24:00	24:00	-7,900	0
TOTALS						100	-6,000

6 **ENERGY TRUE-UP HISTORY:**

BILLING MONTH	BILL TO DATE	WINTER PAID	WINTER OFF	TOTAL ENERGY	ENERGY CHARGES /CREDITS*	MINIMUM ENERGY CHARGES	NON-BYPASSABLE CHARGES**
FEB 2017	02/08/17	-1,000	1,100	100	\$136.17		\$139.80
JAN 2017	01/09/17	0	200	200	\$151.06		\$116.50
DEC 2016	12/08/16	0	100	100	\$110.48		\$93.70
TOTALS				400	\$397.71	\$0.00	\$349.50

*Energy Charges/Credits (-) include all energy related amounts and taxes.
**The State Mandated Non-Bypassable Charge (NBC) is calculated based on your energy usage and is relevant to determine the True-Up amount. This amount is included within the Energy Charges however, cannot be offset by credits from exports. This charge includes the following fees: Public Purpose Programs, Nuclear Decommissioning, DWR Bond Charge and Competition Transition Charge.

For inquiries about your Net Energy Metering bill, please contact the Solar Customer Service Center at 1-877-743-4112.
For all other inquiries, please call 1-800-743-5000.

Date Billed: 11/09/16
Biller: EXR4

Billing Point ID: 123456 1234



Monitoring success: Your Net Energy Metering Statement

**CLICK ON EACH NUMBER FOR A
DETAILED EXPLANATION.**

5 **Current month meter read –**
Keeps track of the net of
your electricity usage and
generation for the current
month.

Pacific Gas and Electric Company

PACIFIC GAS AND ELECTRIC COMPANY
NET ENERGY METERING ELECTRIC STATEMENT
THIS IS NOT A BILL

Service Dates: January 09,2017 to February 08,2017
True-up period from Dec 2016 to Nov 2017

JOHN SMITH
1243 YOUR STREET
ANYTOWN, STATE, 12356

Rate Schedule: A1XP/NEM2
Account ID: 0123456789
Service ID: 0123456789

PAGE 1

3 **TOTAL CURRENT MONTH'S BILLED AMOUNT:** **\$19.71***

*This amount is the minimum you must pay this month and is reflected on your regular monthly blue bill, in addition to the energy charges that you may pay monthly or at the end of the true-up period shown below. It includes the following components:
Distribution \$19.71.

4 **ENERGY CHARGES/CREDITS**

Current Month Energy Charge or Credit (-)	\$136.17
Cumulative Energy Charges or Credits (-) for the current true-up period: <small>This Cumulative Energy Charge does not reflect any payment you may have made.</small>	\$397.71
<small>**Current Month Non-Bypassable Charges</small>	\$139.80
<small>Cumulative Non-Bypassable Charges for the current True-Up period</small>	\$349.50

**The State Mandated Non-Bypassable Charge (NBC) is calculated based on your energy usage and is relevant to determine the True-Up amount. This amount is included within the Energy Charges however, cannot be offset by credits from exports. This charge includes the following fees: Public Purpose Programs, Nuclear Decommissioning, DWR Bond Charge and Competition Transition Charge.

ANY UNPAID ENERGY CHARGES WILL BE DUE AT THE END OF YOUR TRUE-UP PERIOD (Nov 2017)

5 **(E1) CURRENT MONTH METER INFORMATION**

CHANNEL ID	METER BADGE	PRIOR READ DATE	CURRENT READ DATE	PRIOR READ TIME	CURRENT READ TIME	USAGE (kWh)	POS NET USAGE(kWh)
1234567891A	1009884774	01/09/17	02/08/17	24:00	24:00	8,000	-6,000
1234567891C	1009884774	01/09/17	02/08/17	24:00	24:00	-7,900	0
TOTALS						100	-6,000

6 **ENERGY TRUE-UP HISTORY:**

BILLING MONTH	BILL TO DATE	WINTER PART	WINTER OFF	TOTAL ENERGY	ENERGY CHARGES /CREDITS*	MINIMUM ENERGY CHARGES	NON-BYPASSABLE CHARGES**
FEB 2017	02/08/17	-1,000	1,100	100	\$136.17		\$139.80
JAN 2017	01/09/17	0	200	200	\$151.06		\$116.50
DEC 2016	12/08/16	0	100	100	\$110.48		\$93.70
TOTALS				400	\$397.71	\$0.00	\$349.50

*Energy Charges/Credits (-) include all energy related amounts and taxes.
**The State Mandated Non-Bypassable Charge (NBC) is calculated based on your energy usage and is relevant to determine the True-Up amount. This amount is included within the Energy Charges however, cannot be offset by credits from exports. This charge includes the following fees: Public Purpose Programs, Nuclear Decommissioning, DWR Bond Charge and Competition Transition Charge.

For inquiries about your Net Energy Metering bill, please contact the Solar Customer Service Center at 1-877-743-4112.
For all other inquiries, please call 1-800-743-5000.

Date Billed: 11/09/16
Biller: EXR4

Billing Point ID: 123456 1234



Monitoring success: Your Net Energy Metering Statement

**CLICK ON EACH NUMBER FOR A
DETAILED EXPLANATION.**

- 6** **Energy True-Up history –**
Shows how much net energy you generated and consumed each month from the start of your annual True-Up period. All “Energy Charges/ Credits” and “Non-Bypassable Charges” will be reconciled on your annual True-Up.

PACIFIC GAS AND ELECTRIC COMPANY
NET ENERGY METERING ELECTRIC STATEMENT
THIS IS NOT A BILL
Service Dates: January 09,2017 to February 08,2017
True-up period from Dec 2016 to Nov 2017

JOHN SMITH
1243 YOUR STREET
ANYTOWN, STATE, 12356

Rate Schedule: A1XP/NE/M2
Account ID: 0123456789
Service ID: 0123456789

PAGE 1

3 **TOTAL CURRENT MONTH'S BILLED AMOUNT:** **\$19.71***

*This amount is the minimum you must pay this month and is reflected on your regular monthly blue bill, in addition to the energy charges that you may pay monthly or at the end of the true-up period shown below. It includes the following components:
Distribution \$19.71

4 **ENERGY CHARGES/CREDITS**

Current Month Energy Charge or Credit (-)	\$136.17
Cumulative Energy Charges or Credits (-) for the current true-up period: This Cumulative Energy Charge does not reflect any payment you may have made.	\$397.71
<small>*Current Month Non-Bypassable Charges</small>	\$139.80
Cumulative Non-Bypassable Charges for the current True-Up period	\$349.50

*The State Mandated Non-Bypassable Charge (NIBC) is calculated based on your energy usage and is relevant to determine the True-Up amount. This amount is included within the Energy Charges however, cannot be offset by credits from exports. This charge includes the following fees: Public Purpose Programs, Nuclear Decommissioning, DWR Bond Charge and Competition Transition Charge.

ANY UNPAID ENERGY CHARGES WILL BE DUE AT THE END OF YOUR TRUE-UP PERIOD (Nov 2017)

5 **(E1) CURRENT MONTH METER INFORMATION**

CHANNEL ID	METER BADGE	PRIOR READ DATE	CURRENT READ DATE	PRIOR READ TIME	CURRENT READ TIME	USAGE (kWh)	POS NET USAGE(kWh)
1234567891A	1009884774	01/09/17	02/08/17	24:00	24:00	8,000	6,000
1234567891C	1009884774	01/09/17	02/08/17	24:00	24:00	-7,900	0
TOTALS						100	6,000

6 **ENERGY TRUE-UP HISTORY:**

BILLING MONTH	BILL TO DATE	WINTER PART	WINTER OFF	TOTAL ENERGY	ENERGY CHARGES/CREDITS*	MINIMUM ENERGY CHARGES	NON-BYPASSABLE CHARGES**
FEB 2017	02/08/17	-1,000	1,100	100	\$136.17		\$139.80
JAN 2017	01/09/17	0	200	200	\$151.06		\$116.50
DEC 2016	12/08/16	0	100	100	\$110.48		\$92.30
TOTALS				400	\$397.71	\$0.00	\$349.50

*Energy Charges/Credits (-) includes all energy related amounts and taxes.
**The State Mandated Non-Bypassable Charge (NIBC) is calculated based on your energy usage and is relevant to determine the True-Up amount. This amount is included within the Energy Charges however, cannot be offset by credits from exports. This charge includes the following fees: Public Purpose Programs, Nuclear Decommissioning, DWR Bond Charge and Competition Transition Charge.

For inquiries about your Net Energy Metering bill, please contact the Solar Customer Service Center at 1-877-743-4112.
For all other inquiries, please call 1-800-743-5000.

Date Billed: 11/09/16
Bill: EXR4

Billing Point ID: 1234561234



Your PG&E True-Up Statement

Your True-Up Statement gives you a comprehensive year-end summary. It provides you with a final balance after all your credits and charges have been reconciled, and informs you whether or not there is an amount due or if you are eligible for compensation based on the total net usage.

[CLICK HERE TO SEE DETAILS](#)

Pacific Gas and Electric Company
PACIFIC GAS AND ELECTRIC COMPANY
NET ENERGY METERING ELECTRIC STATEMENT
THIS IS NOT A BILL
 Service Dates: December 08, 2016 to January 09, 2017
 Includes True-up period from Dec 2016 to Jan 2017

JOHN SMITH
 1243 VOIR STREET
 ANYTOWN, STATE, 12356

Rate Schedule: A1XP/NETM2
 Account ID: 0123456789
 Service ID: 0123456789

PAGE 1

Dear Customer,

This is your True-Up statement for your PG&E Net Energy Metering account with an interconnected solar (photovoltaic) or wind generator.

This lists your total cumulative energy charges/credits for this True-Up period including any current month energy charges/credits. If you have any net annual charges as listed below, you will also see these on your current monthly blue bills. Any excess energy credits for the True-Up period will not be applied to your next True-Up period. The net metering program was designed by the legislature for systems sized to customer load on an annual basis; currently approved tariffs and legislation provide that no credit be carried forward to the next True-Up period.

Any payments you may have made are reflected on your monthly blue bills. Excess payments you have made over this True-Up period will be applied toward your future bills.

TOTAL TRUE-UP BILLED AMOUNT:	\$2,596.37*
-------------------------------------	--------------------

*This amount includes True-up Energy charges and current month's billed amount and is reflected on your regular monthly blue bills. It includes the following components: Transmission \$202.13, Distribution \$120.50, Public Purpose Programs \$150.00, Nuclear Decommissioning \$2.70, DWR Bond Charge \$53.09, On-Going CFC \$29.00, Energy Cost Recovery Amount \$47.26, Generation \$1,231.54 and Energy Commission Tax \$3.66.

If the electric total charge on the blue bill for this month is very large, it is because you have been paying your energy charges on an annual basis. You have an option of paying your energy charges monthly in the coming year. Under the Net Energy Meter program, you may pay all or part of your energy charges on a monthly basis rather than waiting until True-Up bill. If you did receive a large True-Up bill and would like to discuss your payment options, please call PG&E at (877) 743-4112. Thank you for doing business with PG&E.

Net Surplus Compensation: \$0.00	True-Up Total Net Usage (kWh): 0
---	---

To be eligible for a Net Surplus Compensation, your net True-Up usage must be negative. If you do not meet these requirements, your credit eligibility will be reviewed at the end of your next annual True-Up period.

ENERGY CHARGES/CREDITS	
Current Month Energy Charge or Credit (-)	\$1,486.87
Cumulative Energy Charge or Credit (-) for the current true-up period.	\$2,596.37
This Cumulative Energy Charge does not reflect any payment you may have made.	
*Current Month Non-Responsible Charge	\$339.00
Cumulative Non-Responsible Charge for the current True-Up period	\$233.00

*The time Mandated Non-Responsible Charge (MNC) is reported based on your energy usage and is necessary to determine the True-Up amount. This amount is included within the Energy Charges/Amount, cannot be offset by credits from previous True-Ups and includes the following fees: Public Purpose Programs, Nuclear Decommissioning, DWR Bond Charge and Competitive Transition Charge.

ANY UNPAID ENERGY CHARGES WILL BE DUE AT THE END OF YOUR TRUE-UP PERIOD (Jan 2017)

For inquiries about your Net Energy Metering bill, please contact the Solar Customer Service Center at 1-877-743-4112. For all other inquiries, please call 1-800-743-5000.



Charges, credits, and compensation: Your True-Up Statement

CLICK ON EACH NUMBER FOR A DETAILED EXPLANATION.

1 Service dates and True-Up period – The “Includes True-Up” box indicates that this is your True-Up Statement and the final Net Energy Metering Electric Statement of the 12-month billing cycle. Service Dates reflect the current billing month.

1 Pacific Gas and Electric Company
PACIFIC GAS AND ELECTRIC COMPANY
NET ENERGY METERING ELECTRIC STATEMENT
THIS IS NOT A BILL
 Service Dates: December 08, 2016 to January 09, 2017
 Includes True-up period from Dec 2016 to Jan 2017

JOHN SMITH
 1243 YOUR STREET
 ANYTOWN, STATE, 12356

Rate Schedule: A1XP/NEM2
 Account ID: 0123456789
 Service ID: 0123456789

PAGE 1

Dear Customer,

This is your True-Up statement for your PG&E Net Energy Metering account with an interconnected solar (photovoltaic) or wind generator.

This lists your total cumulative energy charges/credits(-) for this True-Up period including any current month energy charges/credits(-). If you have any net annual charges as listed below, you will also see these on your current monthly blue bills. Any excess energy credits for the True-Up period will not be applied to your next True-Up period. The net metering program was designed by the legislature for systems sized to customer load on an annual basis; currently approved tariffs and legislation provide that no credit be carried forward to the next True-Up period.

Any payments you may have made are reflected on your monthly blue bills. Excess payments you have made over this True-Up period will be applied toward your future bills.

3 **TOTAL TRUE-UP BILLED AMOUNT: \$2,596.37***

*This amount includes True-up Energy charges and current month's billed amount and is reflected on your regular monthly blue bills. It includes the following components:
 Transmission \$262.33, Distribution \$826.39, Public Purpose Programs \$150.90, Nuclear Decommissioning \$2.20, DWR Bond Charge \$53.90, On-Going CTC \$26.00, Energy Cost Recovery Amount \$-0.26, Generation \$1,251.54 and Energy Commission Tax \$3.66.

If the electric total charge on the blue bill for this month is very large, it is because you have been paying your energy charges on an annual basis. You have an option of paying your energy charges monthly in the coming year. Under the Net Energy Meter program you may pay all or part of your energy charges on a monthly basis rather than waiting until True-Up bill. If you did receive a large True-Up bill and would like to discuss your payment options, please call PG&E at (877) 743-4112. Thank you for doing business with PG&E.

5 **Net Surplus Compensation: \$0.00**
 True-Up Total Net Usage (kWh): 0

To be eligible for a Net Surplus Compensation, your net True-Up usage must be negative. If you do not meet these requirements, your credit eligibility will be reviewed at the end of your next annual True-Up period.

4 **ENERGY CHARGES/CREDITS**

Current Month Energy Charge or Credit (-)	\$1,496.87
Cumulative Energy Charges or Credits (-) for the current true-up period:	\$2,596.37
This Cumulative Energy Charge does not reflect any payment you may have made.	
*Current Month Non-Bypassable Charges	\$139.80
Cumulative Non-Bypassable Charges for the current True-Up period	\$233.00

*The State Mandated Non-Bypassable Charge (NBC) is calculated based on your energy usage and is relevant to determine the True-Up amount. This amount is included within the Energy Charges however, cannot be offset by credits from exports. This charge includes the following fees: Public Purpose Programs, Nuclear Decommissioning, DWR Bond Charge and Competition Transition Charge.

ANY UNPAID ENERGY CHARGES WILL BE DUE AT THE END OF YOUR TRUE-UP PERIOD (Jan 2017)

For inquiries about your Net Energy Metering bill, please contact the Solar Customer Service Center at 1-877-743-4112.
 For all other inquiries, please call 1-800-743-5000.



Charges, credits, and compensation: Your True-Up Statement

CLICK ON EACH NUMBER FOR A DETAILED EXPLANATION.

2 Account details – Use the statement for a quick reference to your electric rate schedule, account identification and service identification number.

1 Pacific Gas and Electric Company
PACIFIC GAS AND ELECTRIC COMPANY
NET ENERGY METERING ELECTRIC STATEMENT
THIS IS NOT A BILL
 Service Dates: December 08, 2016 to January 09, 2017
 Includes True-up period from Dec 2016 to Jan 2017

JOHN SMITH
 1243 YOUR STREET
 ANYTOWN, STATE, 12356

Rate Schedule: A1XP/NEM2
 Account ID: 0123456789
 Service ID: 0123456789

PAGE 1

Dear Customer,

This is your True-Up statement for your PG&E Net Energy Metering account with an interconnected solar (photovoltaic) or wind generator.

This lists your total cumulative energy charges/credits(-) for this True-Up period including any current month energy charges/credits(-). If you have any net annual charges as listed below, you will also see these on your current monthly blue bills. Any excess energy credits for the True-Up period will not be applied to your next True-Up period. The net metering program was designed by the legislature for systems sized to customer load on an annual basis; currently approved tariffs and legislation provide that no credit be carried forward to the next True-Up period.

Any payments you may have made are reflected on your monthly blue bills. Excess payments you have made over this True-Up period will be applied toward your future bills.

3 **TOTAL TRUE-UP BILLED AMOUNT: \$2,596.37***

*This amount includes True-up Energy charges and current month's billed amount and is reflected on your regular monthly blue bills. It includes the following components:
 Transmission \$262.33, Distribution \$826.39, Public Purpose Programs \$150.90, Nuclear Decommissioning \$2.20, DWR Bond Charge \$53.90, On-Going CTC \$26.00, Energy Cost Recovery Amount \$-0.26, Generation \$1,251.54 and Energy Commission Tax \$3.66.

If the electric total charge on the blue bill for this month is very large, it is because you have been paying your energy charges on an annual basis. You have an option of paying your energy charges monthly in the coming year. Under the Net Energy Meter program you may pay all or part of your energy charges on a monthly basis rather than waiting until True-Up bill. If you did receive a large True-Up bill and would like to discuss your payment options, please call PG&E at (877) 743-4112. Thank you for doing business with PG&E.

5 **Net Surplus Compensation: \$0.00**
 True-Up Total Net Usage (kWh): 0

To be eligible for a Net Surplus Compensation, your net True-Up usage must be negative. If you do not meet these requirements, your credit eligibility will be reviewed at the end of your next annual True-Up period.

4 **ENERGY CHARGES/CREDITS**

Current Month Energy Charge or Credit (-)	\$1,496.87
Cumulative Energy Charges or Credits (-) for the current true-up period:	\$2,596.37
This Cumulative Energy Charge does not reflect any payment you may have made.	
*Current Month Non-Bypassable Charges	\$139.80
Cumulative Non-Bypassable Charges for the current True-Up period	\$233.00

*The State Mandated Non-Bypassable Charge (NBC) is calculated based on your energy usage and is relevant to determine the True-Up amount. This amount is included within the Energy Charges however, cannot be offset by credits from exports. This charge includes the following fees: Public Purpose Programs, Nuclear Decommissioning, DWR Bond Charge and Competition Transition Charge.

ANY UNPAID ENERGY CHARGES WILL BE DUE AT THE END OF YOUR TRUE-UP PERIOD (Jan 2017)

For inquiries about your Net Energy Metering bill, please contact the Solar Customer Service Center at 1-877-743-4112.
 For all other inquiries, please call 1-800-743-5000.



Charges, credits, and compensation: Your True-Up Statement

CLICK ON EACH NUMBER FOR A DETAILED EXPLANATION.

3 Total True-Up billed amount –
This section notifies you of your final annual True-Up amount in which all energy charges, credits, service charges, taxes and fees are reconciled. This represents the amount that you must pay by the due date on your Energy Statement (PG&E bill).

Pacific Gas and Electric Company **PACIFIC GAS AND ELECTRIC COMPANY**
NET ENERGY METERING ELECTRIC STATEMENT
THIS IS NOT A BILL
 Service Dates: December 08, 2016 to January 09, 2017
 Includes True-up period from Dec 2016 to Jan 2017

JOHN SMITH
 1243 YOUR STREET
 ANYTOWN, STATE, 12356

Rate Schedule: A1XP/NEM2
 Account ID: 0123456789
 Service ID: 0123456789

PAGE 1

Dear Customer,

This is your True-Up statement for your PG&E Net Energy Metering account with an interconnected solar (photovoltaic) or wind generator.

This lists your total cumulative energy charges/credits (-) for this True-Up period including any current month energy charges/credits (-). If you have any net annual charges as listed below, you will also see these on your current monthly blue bills. Any excess energy credits for the True-Up period will not be applied to your next True-Up period. The net metering program was designed by the legislature for systems sized to customer load on an annual basis; currently approved tariffs and legislation provide that no credit be carried forward to the next True-Up period.

Any payments you may have made are reflected on your monthly blue bills. Excess payments you have made over this True-Up period will be applied toward your future bills.

3 TOTAL TRUE-UP BILLED AMOUNT: \$2,596.37*

*This amount includes True-up Energy charges and current month's billed amount and is reflected on your regular monthly blue bills. It includes the following components:
 Transmission \$262.33, Distribution \$826.39, Public Purpose Programs \$150.90, Nuclear Decommissioning \$2.20, DWR Bond Charge \$53.90, On-Going CTC \$26.00, Energy Cost Recovery Amount \$-0.26, Generation \$1,251.54 and Energy Commission Tax \$3.66.

If the electric total charge on the blue bill for this month is very large, it is because you have been paying your energy charges on an annual basis. You have an option of paying your energy charges monthly in the coming year. Under the Net Energy Meter program you may pay all or part of your energy charges on a monthly basis rather than waiting until True-Up bill. If you did receive a large True-Up bill and would like to discuss your payment options, please call PG&E at (877) 743-4112. Thank you for doing business with PG&E.

5 Net Surplus Compensation: \$0.00
 True-Up Total Net Usage (kWh): 0

To be eligible for a Net Surplus Compensation, your net True-Up usage must be negative. If you do not meet these requirements, your credit eligibility will be reviewed at the end of your next annual True-Up period.

4 ENERGY CHARGES/CREDITS

Current Month Energy Charge or Credit (-)	\$1,496.87
Cumulative Energy Charges or Credits (-) for the current true-up period:	\$2,596.37
This Cumulative Energy Charge does not reflect any payment you may have made.	
*Current Month Non-Bypassable Charges	\$139.80
Cumulative Non-Bypassable Charges for the current True-Up period	\$233.00

*The State Mandated Non-Bypassable Charge (NBC) is calculated based on your energy usage and is relevant to determine the True-Up amount. This amount is included within the Energy Charges however, cannot be offset by credits from exports. This charge includes the following fees: Public Purpose Programs, Nuclear Decommissioning, DWR Bond Charge and Competition Transition Charge.

ANY UNPAID ENERGY CHARGES WILL BE DUE AT THE END OF YOUR TRUE-UP PERIOD (Jan 2017)

For inquiries about your Net Energy Metering bill, please contact the Solar Customer Service Center at 1-877-743-4112.
 For all other inquiries, please call 1-800-743-5000.



Charges, credits, and compensation: Your True-Up Statement

CLICK ON EACH NUMBER FOR A DETAILED EXPLANATION.

4 **Energy charges/credits –** Your Net Energy Metering Electric Statement keeps track of your energy charges and credits from the current billing month and the cumulative charges and credits from the start of your 12-month billing cycle.

1 Pacific Gas and Electric Company
PACIFIC GAS AND ELECTRIC COMPANY
NET ENERGY METERING ELECTRIC STATEMENT
THIS IS NOT A BILL
 Service Dates: December 08, 2016 to January 09, 2017
 Includes True-up period from Dec 2016 to Jan 2017

JOHN SMITH
 1243 YOUR STREET
 ANYTOWN, STATE, 12356

Rate Schedule: A1XP/NEM2
 Account ID: 0123456789
 Service ID: 0123456789

PAGE 1

Dear Customer,

This is your True-Up statement for your PG&E Net Energy Metering account with an interconnected solar (photovoltaic) or wind generator.

This lists your total cumulative energy charges/credits(-) for this True-Up period including any current month energy charges/credits(-). If you have any net annual charges as listed below, you will also see these on your current monthly blue bills. Any excess energy credits for the True-Up period will not be applied to your next True-Up period. The net metering program was designed by the legislature for systems sized to customer load on an annual basis; currently approved tariffs and legislation provide that no credit be carried forward to the next True-Up period.

Any payments you may have made are reflected on your monthly blue bills. Excess payments you have made over this True-Up period will be applied toward your future bills.

3 **TOTAL TRUE-UP BILLED AMOUNT: \$2,596.37***

*This amount includes True-up Energy charges and current month's billed amount and is reflected on your regular monthly blue bills. It includes the following components:
 Transmission \$262.33, Distribution \$826.39, Public Purpose Programs \$150.90, Nuclear Decommissioning \$2.20, DWR Bond Charge \$53.90, On-Going CTC \$26.00, Energy Cost Recovery Amount \$-0.26, Generation \$1,251.54 and Energy Commission Tax \$3.66.

If the electric total charge on the blue bill for this month is very large, it is because you have been paying your energy charges on an annual basis. You have an option of paying your energy charges monthly in the coming year. Under the Net Energy Meter program you may pay all or part of your energy charges on a monthly basis rather than waiting until True-Up bill. If you did receive a large True-Up bill and would like to discuss your payment options, please call PG&E at (877) 743-4112. Thank you for doing business with PG&E.

5 **Net Surplus Compensation: \$0.00**
 True-Up Total Net Usage (kWh): 0

To be eligible for a Net Surplus Compensation, your net True-Up usage must be negative. If you do not meet these requirements, your credit eligibility will be reviewed at the end of your next annual True-Up period.

4 **ENERGY CHARGES/CREDITS**

Current Month Energy Charge or Credit (-)	\$1,496.87
Cumulative Energy Charges or Credits (-) for the current true-up period:	\$2,596.37
This Cumulative Energy Charge does not reflect any payment you may have made.	
*Current Month Non-Bypassable Charges	\$139.80
Cumulative Non-Bypassable Charges for the current True-Up period	\$233.00

*The State Mandated Non-Bypassable Charge (NBC) is calculated based on your energy usage and is relevant to determine the True-Up amount. This amount is included within the Energy Charges however, cannot be offset by credits from exports. This charge includes the following fees: Public Purpose Programs, Nuclear Decommissioning, DWR Bond Charge and Competition Transition Charge.

ANY UNPAID ENERGY CHARGES WILL BE DUE AT THE END OF YOUR TRUE-UP PERIOD (Jan 2017)

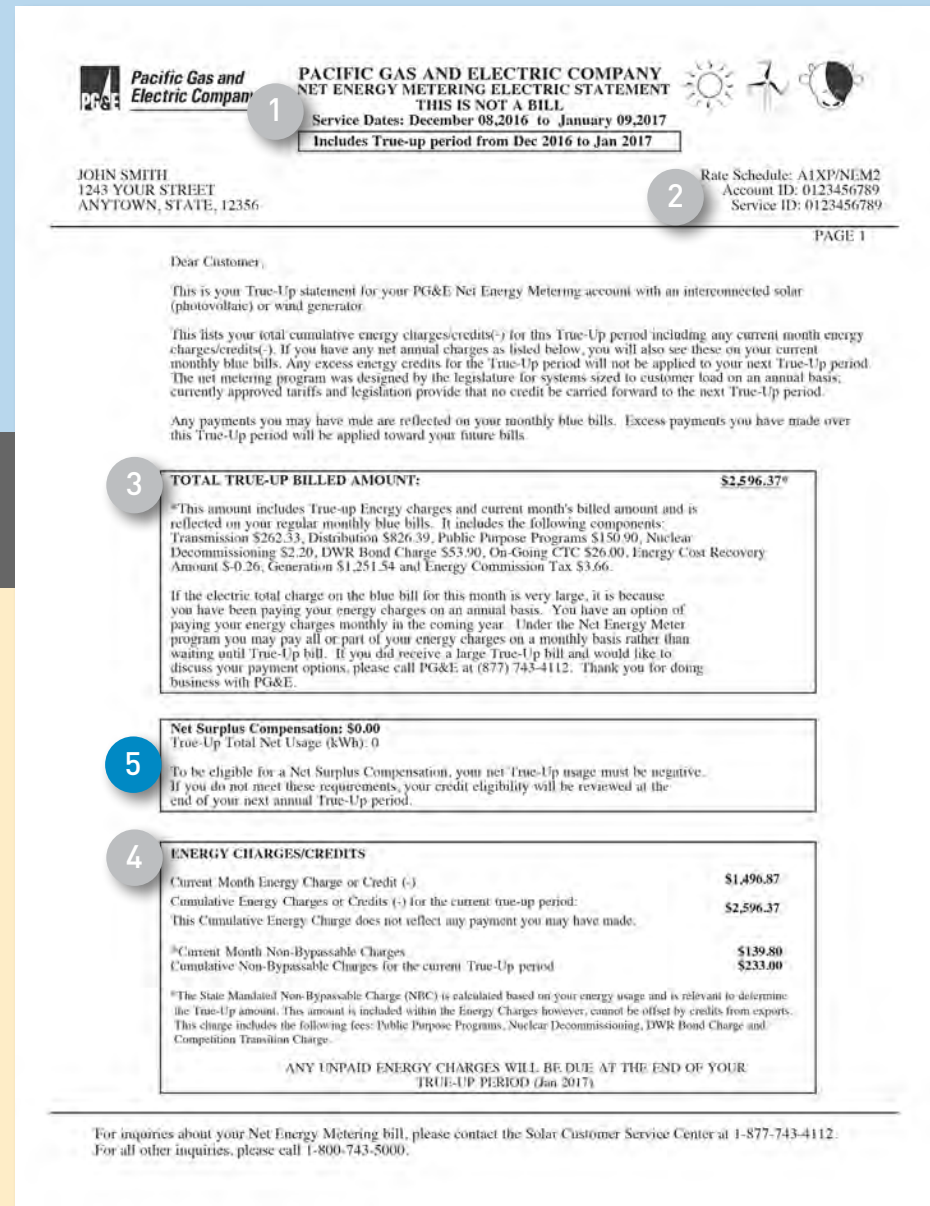
For inquiries about your Net Energy Metering bill, please contact the Solar Customer Service Center at 1-877-743-4112.
 For all other inquiries, please call 1-800-743-5000.



Charges, credits, and compensation: Your True-Up Statement

CLICK ON EACH NUMBER FOR A DETAILED EXPLANATION.

5 Net Surplus Compensation – The Net Surplus Compensation box will only appear on your 12th month True-Up Statement and will show whether you are eligible to receive Net Surplus Compensation. If you generated more energy than you consumed over the entire 12-month billing cycle, you may be eligible to receive payment for the excess allocated energy. Compensation is a market price of approximately \$0.03 per kilowatt-hour (kWh).





Adding to your solar savvy

Let's take a look at some **key questions** other customers have asked.

CLICK QUESTIONS FOR FAST ANSWERS

- **Can I access my charges and credits online?**
- Why is it important to know whether I generated more energy than I used or vice versa?
- Why are my Net Energy Metering payments not reflected in the statement?
- Why is the PG&E payment for excess energy I generated less than the rate I pay?
- What does having a SmartMeter™ mean for me?

We strongly recommend enrolling in My Account at pge.com for easy access to your PG&E bill and Electric Statements. You can review your net usage online and make payments on your PG&E bill. Here, you will find the information you need to understand and manage your energy use.



Adding to your solar savvy

Let's take a look at some **key questions** other customers have asked.

CLICK QUESTIONS FOR FAST ANSWERS

- [Can I access my charges and credits online?](#)
- **Why is it important to know whether I generated more energy than I used or vice versa?**
- [Why are my Net Energy Metering payments not reflected in the statement?](#)
- [Why is the PG&E payment for excess energy I generated less than the rate I pay?](#)
- [What does having a SmartMeter™ mean for me?](#)

While solar should save money by cutting down on your need to purchase power, you can go even further to maximize your benefits. Understanding when and how you are using or generating energy helps you make informed decisions about managing your usage.



Adding to your solar savvy

Let's take a look at some **key questions** other customers have asked.

CLICK QUESTIONS FOR FAST ANSWERS

- [Can I access my charges and credits online?](#)
- [Why is it important to know whether I generated more energy than I used or vice versa?](#)
- **[Why are my Net Energy Metering payments not reflected in the statement?](#)**
- [Why is the PG&E payment for excess energy I generated less than the rate I pay?](#)
- [What does having a SmartMeter™ mean for me?](#)

Under the Net Energy Metering program, you are on an annual True-Up period to allow the credits you accumulate to offset the charges you accrue over the course of the entire 12-month billing cycle. Therefore, payments made in advance are allocated to any charges on your PG&E bill.



Adding to your solar savvy

Let's take a look at some **key questions** other customers have asked.

CLICK QUESTIONS FOR FAST ANSWERS

- [Can I access my charges and credits online?](#)
- [Why is it important to know whether I generated more energy than I used or vice versa?](#)
- [Why are my Net Energy Metering payments not reflected in the statement?](#)
- **[Why is the PG&E payment for excess energy I generated less than the rate I pay?](#)**
- [What does having a SmartMeter™ mean for me?](#)

In accordance with the legislation creating this excess energy payment program, the CPUC set compensation at about \$0.03 per kWh to be consistent with the market price for energy.



Adding to your solar savvy

Let's take a look at some **key questions** other customers have asked.

CLICK QUESTIONS FOR FAST ANSWERS

- [Can I access my charges and credits online?](#)
- [Why is it important to know whether I generated more energy than I used or vice versa?](#)
- [Why are my Net Energy Metering payments not reflected in the statement?](#)
- [Why is the PG&E payment for excess energy I generated less than the rate I pay?](#)
- **What does having a SmartMeter™ mean for me?**

SmartMeter™ technology gives you a detailed and useful view of your net energy usage. You can see a breakdown of your monthly net energy usage in hourly or daily intervals to see how you earn credits when sending energy to the grid, or incur charges by drawing electricity from the grid.



Getting the most out of SmartMeter™ and My Account

The SmartMeter™ measures the flow of energy between your business and the electric grid. The best way to take advantage of this information is to enroll in PG&E My Account at pge.com, which provides easy access to monitor your net energy usage and the ability to make informed decisions about how to manage your energy.

- **Net Energy Use**
- Instant Access to Bills
- Monthly Energy Usage
- Greater Analysis



See your net energy use.

The difference between what you generated and what you consumed—on a daily, monthly, and yearly basis.

Visit My Account at pge.com and have your PG&E account number (which can be found on your Energy Statement) and a valid email address available.

Please note that SmartMeter™-enabled benefits are not available if you have opted out.



Getting the most out of SmartMeter™ and My Account

The SmartMeter™ measures the flow of energy between your business and the electric grid. The best way to take advantage of this information is to enroll in PG&E My Account at pge.com, which provides easy access to monitor your net energy usage and the ability to make informed decisions about how to manage your energy.

- Net Energy Use
- **Instant Access to Bills**
- Monthly Energy Usage
- Greater Analysis



Get instant access to your PG&E bills and Net Energy Metering (NEM) Electric Statements by viewing and downloading them online.

Visit My Account at pge.com and have your PG&E account number (which can be found on your Energy Statement) and a valid email address available.

Please note that SmartMeter™-enabled benefits are not available if you have opted out.



Getting the most out of SmartMeter™ and My Account

The SmartMeter™ measures the flow of energy between your business and the electric grid. The best way to take advantage of this information is to enroll in PG&E My Account at pge.com, which provides easy access to monitor your net energy usage and the ability to make informed decisions about how to manage your energy.

- Net Energy Use
- Instant Access to Bills
- **Monthly Energy Usage**
- Greater Analysis



View a breakdown of your monthly net energy usage in hourly or daily intervals to see how you earn credits by sending energy to the grid, or generate charges by drawing electricity from the grid throughout the month.

Visit My Account at pge.com and have your PG&E account number (which can be found on your Energy Statement) and a valid email address available.

Please note that SmartMeter™-enabled benefits are not available if you have opted out.



Getting the most out of SmartMeter™ and My Account

The SmartMeter™ measures the flow of energy between your business and the electric grid. The best way to take advantage of this information is to enroll in PG&E My Account at pge.com, which provides easy access to monitor your net energy usage and the ability to make informed decisions about how to manage your energy.

- Net Energy Use
- Instant Access to Bills
- Monthly Energy Usage
- **Greater Analysis**



Download this information in a spreadsheet format for even greater analysis. Simply use the “Green Button” under the “My Usage” tab, and you will find new ways to maximize your renewable energy investment.

Visit My Account at pge.com and have your PG&E account number (which can be found on your Energy Statement) and a valid email address available.

Please note that SmartMeter™-enabled benefits are not available if you have opted out.



WE ARE HERE
TO **HELP**

Thank you again for choosing renewable energy. We would be delighted to answer any of your questions or help in any other way we can. Just click the **Learn More** button or call the **Solar Customer Service Center** at **1-877-743-4112**, from 8 a.m. to 5 p.m., Monday through Friday, to talk.

[LEARN MORE](#)

